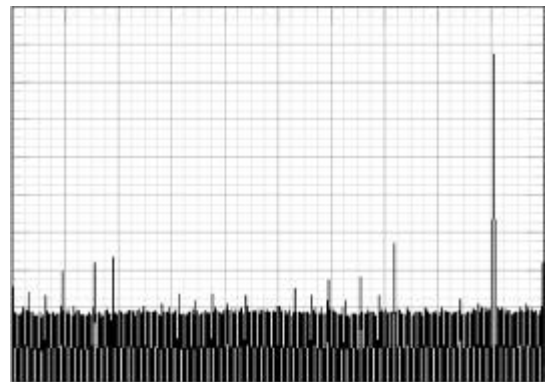
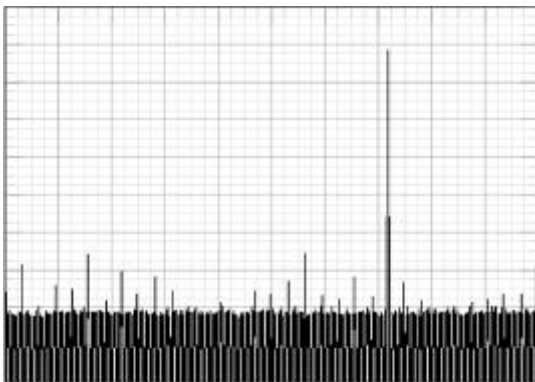
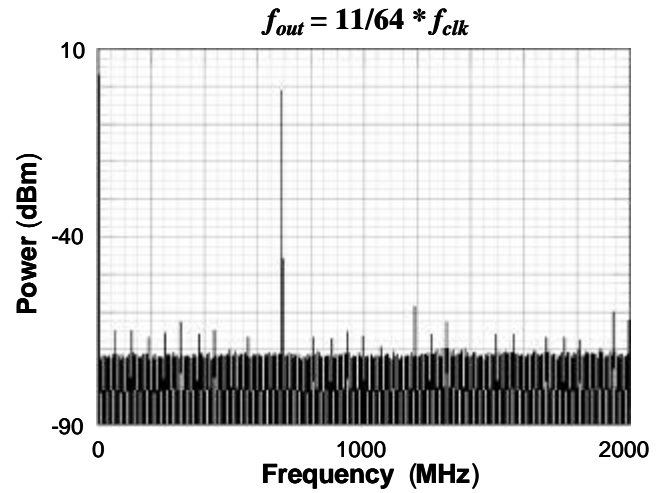
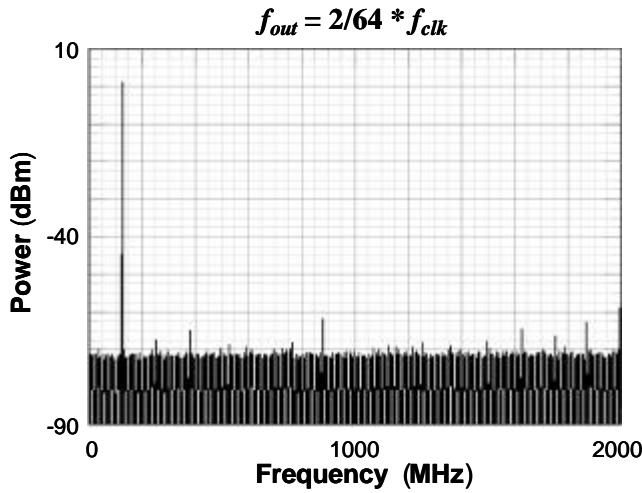


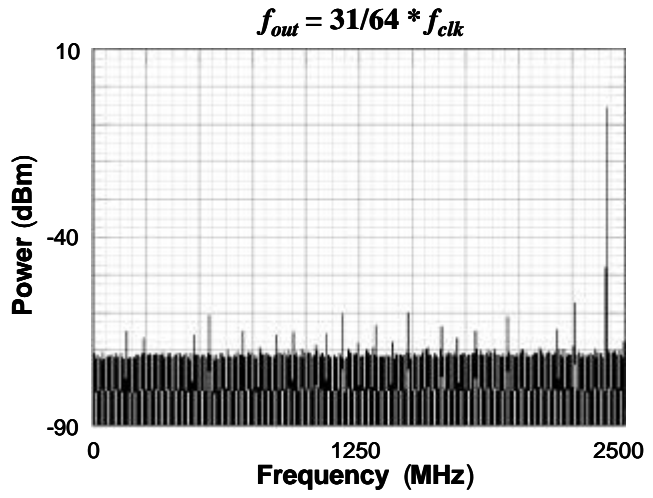
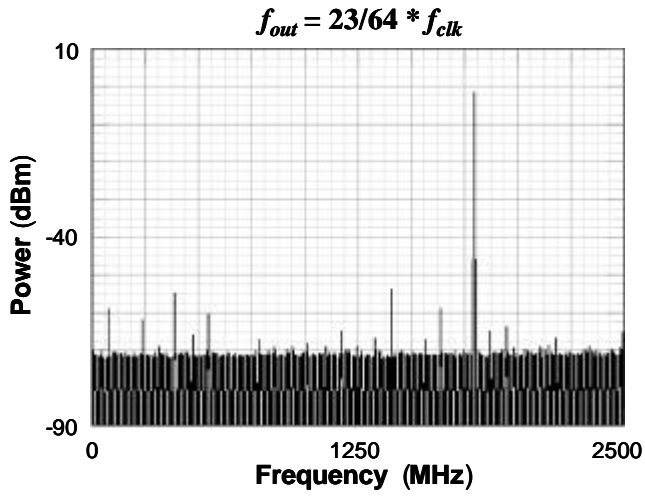
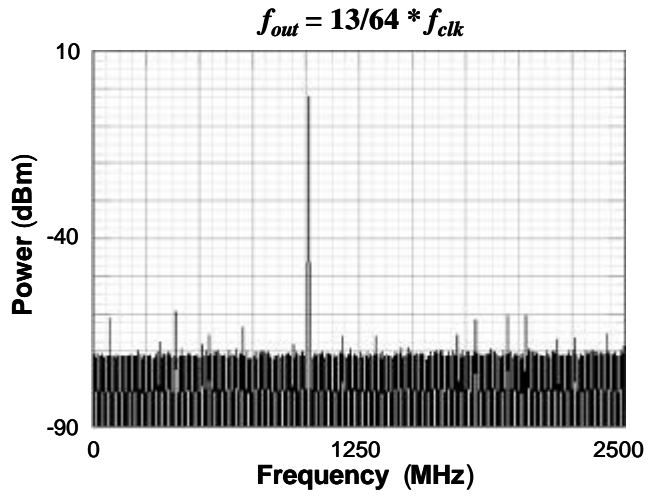
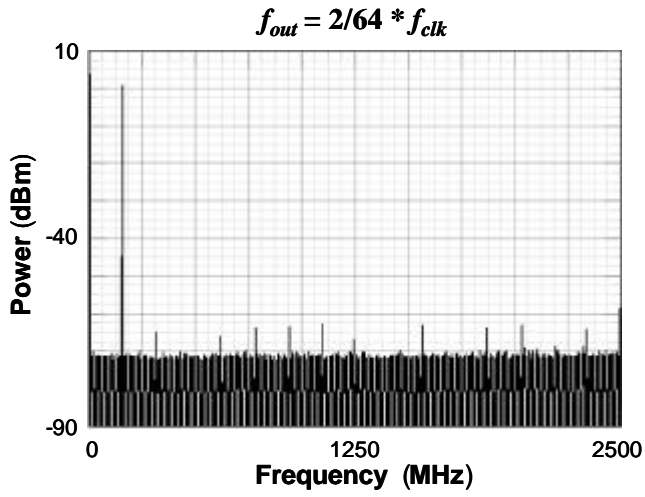
outputs are also provided. A RESET function is provided for system applications which need to synchronize the outputs from multiple MD6579's.

Representative Measured RF Spectrum

$$f_{clk} = 4.0 \text{ GHz}$$



$f_{clk} = 5.0 \text{ GHz}$



$$f_{clk} = 6.0 \text{ GHz}$$

